



EMAP II Polyclonal Antibody

Catalog No	YP-Ab-16057
Isotype	IgG
Reactivity	Human;Rat;Mouse;
Applications	WB;ELISA
Gene Name	AIMP1
Protein Name	Aminoacyl tRNA synthase complex-interacting multifunctional protein 1
Immunogen	The antiserum was produced against synthesized peptide derived from the Internal region of human AIMP1. AA range:91-140
Specificity	EMAP II Polyclonal Antibody detects endogenous levels of EMAP II protein.
Formulation	Liquid in PBS containing 50% glycerol, 0.5% BSA and 0.02% sodium azide.
Source	Polyclonal, Rabbit,IgG
Purification	The antibody was affinity-purified from rabbit antiserum by affinity-chromatography using epitope-specific immunogen.
Dilution	Western Blot: 1/500 - 1/2000. ELISA: 1/10000. Not yet tested in other applications.
Concentration	1 mg/ml
Purity	≥90%
Storage Stability	-20°C/1 year
Synonyms	AIMP1; EMAP2; SCYE1; Aminoacyl tRNA synthase complex-interacting multifunctional protein 1; Multisynthase complex auxiliary component p43
Observed Band	34kD
Cell Pathway	Nucleus . Cytoplasm, cytosol . Secreted . Endoplasmic reticulum . Golgi apparatus . Enriched in secretory vesicles of pancreatic alpha cells and secreted from the pancreas in response to low glucose levels (By similarity). Secreted in response to hypoxia (PubMed:10850427). Also secreted in response to both apoptotic and necrotic cell death. .
Tissue Specificity	Trachea,
Function	angiogenesis, blood vessel development, regulation of endothelial cell proliferation, negative regulation of endothelial cell proliferation, vasculature development, monosaccharide metabolic process, glucose metabolic process, tRNA metabolic process, translation, tRNA aminoacylation for protein translation, apoptosis, cell motion, chemotaxis,defense response, inflammatory response, cell adhesion, cell-cell signaling, behavior, locomotory behavior, cell death,negative regulation of cell proliferation, response to wounding, programmed cell death, death, cell migration, hexose metabolic process, biological adhesion, ncRNA metabolic process, regulation of cell proliferation, taxis, amino acid activation, tRNA aminoacylation, blood vessel morphogenesis, cell motility, leukocyte migration, localization of cell,

**Background**

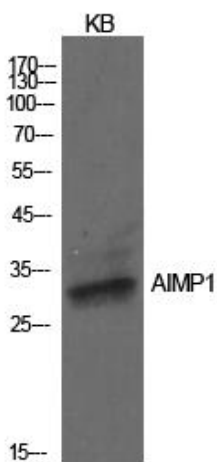
The protein encoded by this gene is a cytokine that is specifically induced by apoptosis, and it is involved in the control of angiogenesis, inflammation, and wound healing. The release of this cytokine renders the tumor-associated vasculature sensitive to tumor necrosis factor. The precursor protein is identical to the p43 subunit, which is associated with the multi-tRNA synthetase complex, and it modulates aminoacylation activity of tRNA synthetase in normal cells. This protein is also involved in the stimulation of inflammatory responses after proteolytic cleavage in tumor cells. Multiple transcript variants encoding different isoforms have been found for this gene. A pseudogene has been identified on chromosome 20. [provided by RefSeq, Dec 2008],

matters needing attention

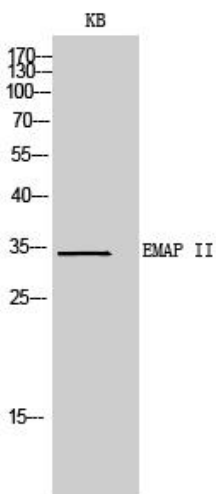
Avoid repeated freezing and thawing!

Usage suggestions

This product can be used in immunological reaction related experiments. For more information, please consult technical personnel.

Products Images

Western Blot analysis of KB cells using EMAP II Polyclonal Antibody. Secondary antibody(catalog#:RS0002) was diluted at 1:20000



Western Blot analysis of KB cells using EMAP II Polyclonal Antibody. Secondary antibody(catalog#:RS0002) was diluted at 1:20000